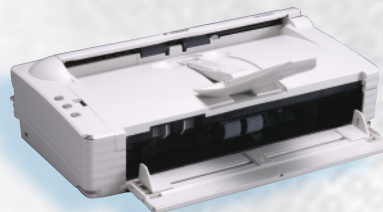


Canon DR-2580C

The compact 25ppm A4 workgroup scanner is an efficient addition to every office. The scanner's innovative feeder system has flexible rollers which allow documents (including thicker paper or plastic cards) to be separated and easily fed into the scanner. Additional flexibility is provided by the A4 or A5 flatbed option which can be added to the scanner. This allows to process heavy, bound or thin documents.



Working Environment

The DR-2580C is ideally suited for personal use or small workgroups processing between 200 and 1,000 pages per day. The flexible feeder system makes DR-2580C the ideal choice for applications when thicker documents such as credit cards, driving licences, etc need to be scanned.

Top Features

- Ultra-compact A4 duplex scanner
- Processing speeds of up to 25 ppm for greyscale or black and white documents, 13ppm for colour documents
- Documents with uneven edges, thick paper documents or plastic cards can all be fed into the scanner
- Ultrasonic double feed control
- Flatbed options available
- **Accessories (not included)**
- Barcode Module II
- Flatbed unit A4 or A5 size
- Soft Carrying Case
- Kofax VRS 4 Professional for Desktop Scanning

Included

- ISIS and TWAIN drivers
- User Manual
- Adobe Acrobat® 7.0
- CapturePerfect 3.0 scan software
- USB connection cable

Scanning mode	Duplex	
Document feed	ADF (50 sheets) optional Flatbed	
Document size	Business cards to A4	
Optical resolution	600dpi	
Speed (A4, Portrait)	Simplex	Duplex
B/W (200dpi)	25ppm	50ipm
Colour (200dpi)	13ppm	26ipm
Interface	USB 2.0	
Dimensions (WxDxH)	308 x 169 x 82 mm	
	315 x 555 x 155 mm (+ Flatbed)	
Weight	1.9 kg (Scanner) 3.8 kg (Flatbed)	
Noise level (operating)	< 66 dB(A)	
Noise level (stand-by)	< 40 dB(A)	

